

## ATP2B1 Recombinant antibody

**Cat:** B36430S

**Company:** HaoKebio

**Uniprot ID:** P20020

**Applications:** IHC:1:250-1:1000

**Organism:** Rabbit

IHC-Polymer:1:1000-1:4000

**Species reactivity:** Human Mouse

IHC-TSA:1:1200-1:5000

**Molecular Weight Calculation:** 135 kDa

IF:1:50

**Observed Molecular Weight:** 130 kDa

WB:1:5000-1:50000

### Background:

ATPase plasma membrane Ca<sup>2+</sup> transporting 1 (ATP2B1, also known as plasma membrane Ca<sup>2+</sup> pump isoform 1; PMCA1) belongs to the family of ATP-driven calmodulin-dependent Ca<sup>2+</sup> pumps that participate in the regulation of intracellular free Ca<sup>2+</sup>. The ATP2B1 contents of extracellular vesicles are increased in prostate cancer treated with enzalutamide and are negatively regulated by androgen receptors. ATP2B1 plays an important role in the prognosis of cholangiocarcinoma. Furthermore, ATP2B1 plays an important role in the prognosis of cholangiocarcinoma and can be a prognostic factor for cholangiocarcinoma.

### Synonyms:

PMCA1kb, PMCA1, 240848D10

### Immunogen:

Recombinant protein

### Isotype:

IgG

### Subcellular location:

Membrane, Cytoplasm

### Purity:

Affinity purification

### Form:

Liquid

### Storage Buffer:

PBS with 0.02% sodium azide, 100 µg/ml BSA and 50% glycerol.

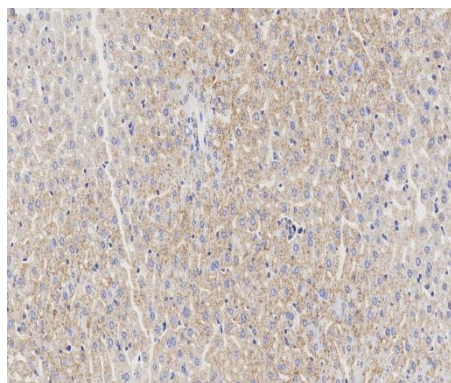
### Storage:

Store at -20 °C for one year.

### Experimental procedure:

Antigen retrieval: Citrate buffer (pH 9.0), Medium high heat for 8 minutes, stop for 7 minutes, medium high heat for 8 minutes. Incubate antibody, 4°C overnight. Secondary antibody: Poly-HRP Goat Anti-Rabbit & Mouse Universal Secondary Antibody, RT, 1h.

### Images:



Sample: Mouse liver, 4% PFA 12-24h

### Source of Reagents:

发表[中文论文]请标注:ATP2B1(B36430S)由杭州浩克生物技术有限公司提供;

发表[英文论文]请标注:ATP2B1(B36430S) were kindly provided by Hangzhou Haoke Biotechnology Co., Ltd.