

## Myosin heavy chain Monoclonal antibody

**Cat:**B35001D

**Company:** HaoKeBio

**Uniprot ID:**P12882

**Applications:** IHC:1:500-1:1000

**Organism:**Rabbit

IHC-Polymer:1:2000-14000

**Species reactivity:**Human Mouse Rat

IHC-TSA:1:2500-1:5000

**Molecular Weight Calculation:** 223 kDa

IF:1:50

**Observed Molecular Weight:** 223 kDa

WB:1:1000

### Background:

Myosin is a major contractile protein which converts chemical energy into mechanical energy through the hydrolysis of ATP. Myosin is a hexameric protein composed of a pair of myosin heavy chains (MYH) and two pairs of nonidentical light chains. Myosin heavy chains are encoded by a multigene family. In mammals at least 10 different myosin heavy chain (MYH) isoforms have been described from striated, smooth, and nonmuscle cells. These isoforms show expression that is spatially and temporally regulated during development.

### Protein full name:

Myosin heavy chain

### Synonyms:

MYHa; HEL71; MYHSA1; MyHC-2x; MyHC-2X/D

### Immunogen:

Recombinant protein

### Isotype:

IgG2a

### Subcellular location:

Cytoplasm

### Purity:

Affinity purification

### Form:

Liquid

### Storage Buffer:

PBS with 0.02% sodium azide, 100 µg/ml BSA and 50% glycerol.

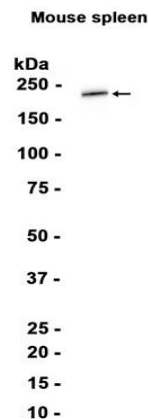
### Storage:

Store at -20 °C for one year.

### Experimental procedure:

Antigen retrieval: Citrate buffer (pH 9.0), Medium high heat for 8 minutes, stop for 7 minutes, medium high heat for 8 minutes. Incubate antibody, 4°C overnight. Secondary antibody: Poly-HRP Goat Anti-Rabbit & Mouse Universal Secondary Antibody, RT, 1h.

### Images:



Dilution of 1:1000 incubated at room temperature for 1.5 hours.

### Source of Reagents:

发表[中文论文]请标注:Myosin heavy chain(B35001D)由杭州浩克生物技术有限公司提供;

发表[英文论文]请标注:Myosin heavy chain(B35001D) were kindly provided by Hangzhou Haoke Biotechnology Co., Ltd.